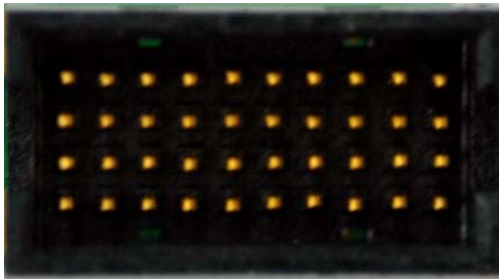


Electrode to Connector Map

Assembly type	Any 'A' style 32-channel probe on A32 package (standard).	
Version	V3. July 2007	
Connector	Samtec MOLC-110-01-S-Q	
Mating Connector	Samtec FOLC-110-L4-S-Q	
Compatible Headstages	TDT	NN32AC, RA16AC, RA16AC4, RA16CH
	Multi-Channel Systems	MPA32I
	Plexon	HST/32V-G20, Two HST/16o25-18P
	Neuralynx	HS-36
Compatible Adaptors	TDT	ACx2-NN, CHx2-NN
	Multi-Channel Systems	ASPT-MP-32
	Plexon	ADP/32V-36P-MICH, ADP/2-16o25-18P-MICH, ADP/2-16V-G20-MICH
	Neuralynx	EIB-MiSi32
Reference site	Present on most 32-channel designs. Please check the catalog CAD drawings.	
Note	Electrode sites faces up (as shown in the picture). To enable ground pin, solder a wire to either pad on the left	



CONNECTOR PIN OUT



11	9	7	5	3	2	6	8	10	12
G	R			1	4	13	14	15	16
G				26	24	20	19	18	17
32	30	31	28	29	27	25	22	23	21

Orientation: probe to the right and probe side down



