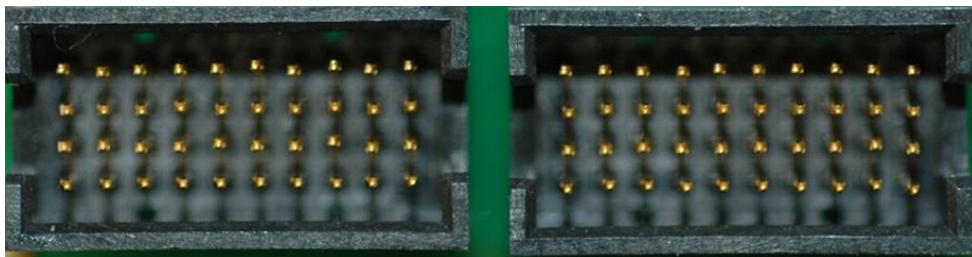


Electrode to Connector Map

Assembly type	Any 'A' style 64-channel probe on A64 package (standard).	
Version	V2. Jan 2008	
Connector	Two Samtec MOLC-110-01-S-Q	
Mating Connector	Two Samtec FOLC-110-L4-S-Q	
Compatible Headstages	TDT	NN64AC
	Multi-Channel Systems	Two MPA32I
	Plexon	Two HST/16V20
	Neuralynx	Two HS-36
Compatible Adaptors	Multi-Channel Systems	Two ADPT-MP-32, ADPT-MP-54
	Plexon	ADP/2-32V-MICH
	Neuralynx	EIB-MiSi64, EIB-MiSi64 inline
Reference site	Present on some 64-channel designs. Please check the catalog CAD drawings.	
Note	Electrode sites faces up (as shown in the picture). To enable ground pin, solder a wire to either pad on the left	



CONNECTOR PIN OUT



23	26	21	27	28	19	17	15	13	11
				25	24	22	20	18	16
				40	41	43	45	47	49
42	39	44	38	37	46	48	50	52	54

9	14	7	12	5	3	8	2	6	1
				10	4	29	32	31	30
				55	61	36	33	34	35
48	47	46	45	44	42	41	40	39	38

Orientation: probe to the right and probe side down



ELECTRODE SITE MAP

