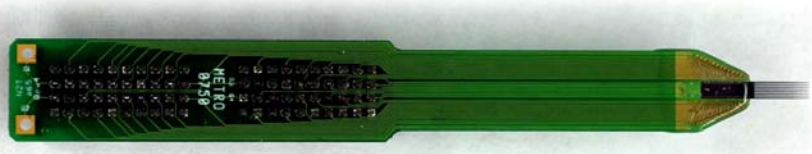
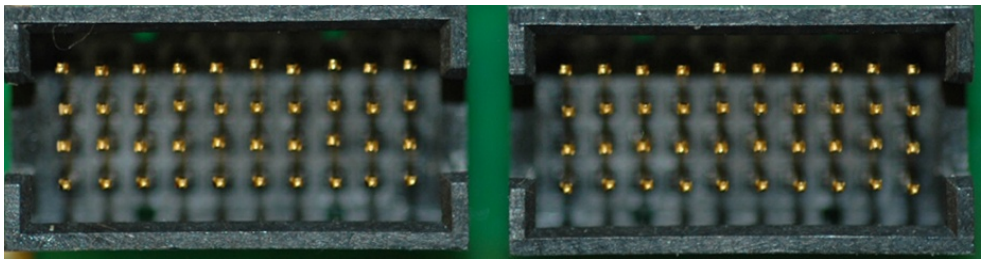


Electrode to Connector Map		
Assembly type	Any 'A' style 64-channel probe on A64 package (standard).	
Version	V2. Jan 2008	
Connector	Two Samtec MOLC-110-01-S-Q	
Mating Connector	Two Samtec FOLC-110-L4-S-Q	
Compatible Headstages	TDT	NN64AC
	Multi-Channel Systems	Two MPA32I
	Plexon	Two HST/16V20
	Neuralynx	Two HS-36
Compatible Adaptors	Multi-Channel Systems	Two ADPT-MP-32, ADPT-MP-54
	Plexon	ADP/2-32V-MICH
	Neuralynx	EIB-MiSi64, EIB-MiSi64 inline
Reference site	Present on some 64-channel designs. Please check the catalog CAD drawings.	
Note	Electrode sites faces up (as shown in the picture). To enable ground pin, solder a wire to either pad on the left	



CONNECTOR PIN OUT



1	2	3	4	5	7	9	11	13	15
G				6	8	10	2	14	16
G				59	57	55	53	51	49
64	63	62	61	60	58	56	54	52	50

17	18	19	20	21	23	24	25	26	27
	R			22	28	32	29	30	31
				43	37	33	36	35	34
48	47	46	45	44	42	41	40	39	38

Orientation: probe to the right and probe side down



ELECTRODE SITE MAP

