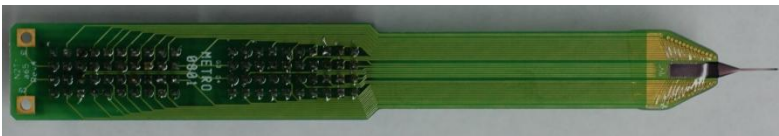
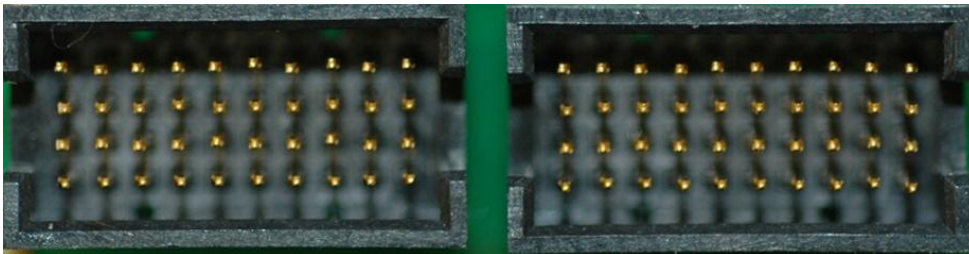


Electrode to Connector Map		
Assembly type	Any Polytrode style 54-channel probe on A64 package (standard).	
Version	V3. Nov 2008	
Connector	Two Samtec MOLC-110-01-S-Q	
Mating Connector	Two Samtec FOLC-110-L4-S-Q	
Compatible Headstages	TDT	NN64AC
	Multi-Channel Systems	Two MPA32I
	Plexon	Two HST/16V20
	Neuralynx	Two HS-36
Compatible Adaptors	Multi-Channel Systems	Two ADPT-MP-32, ADPT-MP-54
	Plexon	ADP/2-32V-MICH
	Neuralynx	EIB-MiSi64, EIB-MiSi64 inline
Reference site	No Reference Site present	
Note	Electrode sites faces up (as shown in the picture). To enable ground pin, solder a wire to either pad on the left V3 map corrects pin errors (37, 39, 40) on 1B design.	



**CONNECTOR PIN OUT**



22	24	20	23	18	16	14	12	10	8
G				21	19	17	15	13	11
G				34	36	38	40	42	44
33	31	35	32	37	39	41	43	45	47

6	9	4	7	2		3		1	
				5		27		25	26
				50		28		30	29
49	46	51	48	53		52		54	

Orientation: probe to the right and probe side down



## ELECTRODE SITE MAP

